

Lack
of
'Urban Design'
in
Gurgaon

Rajat Ray

G u r g a o n

City without **'Structure'** but an Assemblage
A Patch City ?

City without **Centre** and **Sense of History**
Without **Clear Periphery**

City without **Spine and Streets**,

City without **'Urban Space'**

City of discrete **'Forms'** and not of **'Form-Space'**

G u r g a o n

City without **'Ground Sensitivity'**

City of **'Figures'** without meaningful **'Grounds'**

City of **'Super - Structures'**
Without **'Infrastructure'**

City of the Private & the Gated
(Individuals, Communities, & Vehicles)

Without the **Public (People & Pedestrians!)**

G u r g a o n

City without **'Ground Sensitivity'**

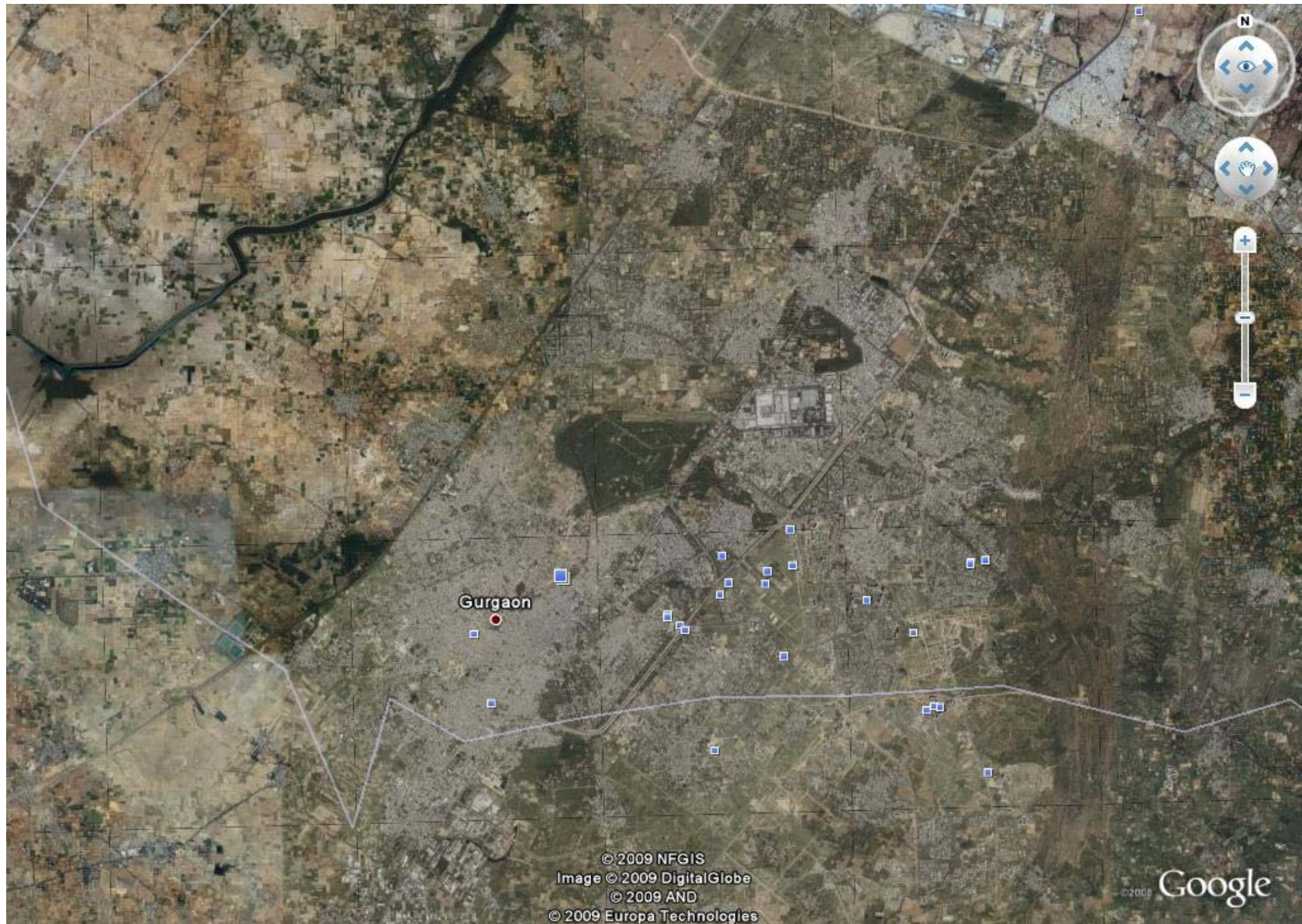
City of **'Figures'** without meaningful **'Grounds'**

City of **'Super - Structures'**
Without **'Infrastructure'**

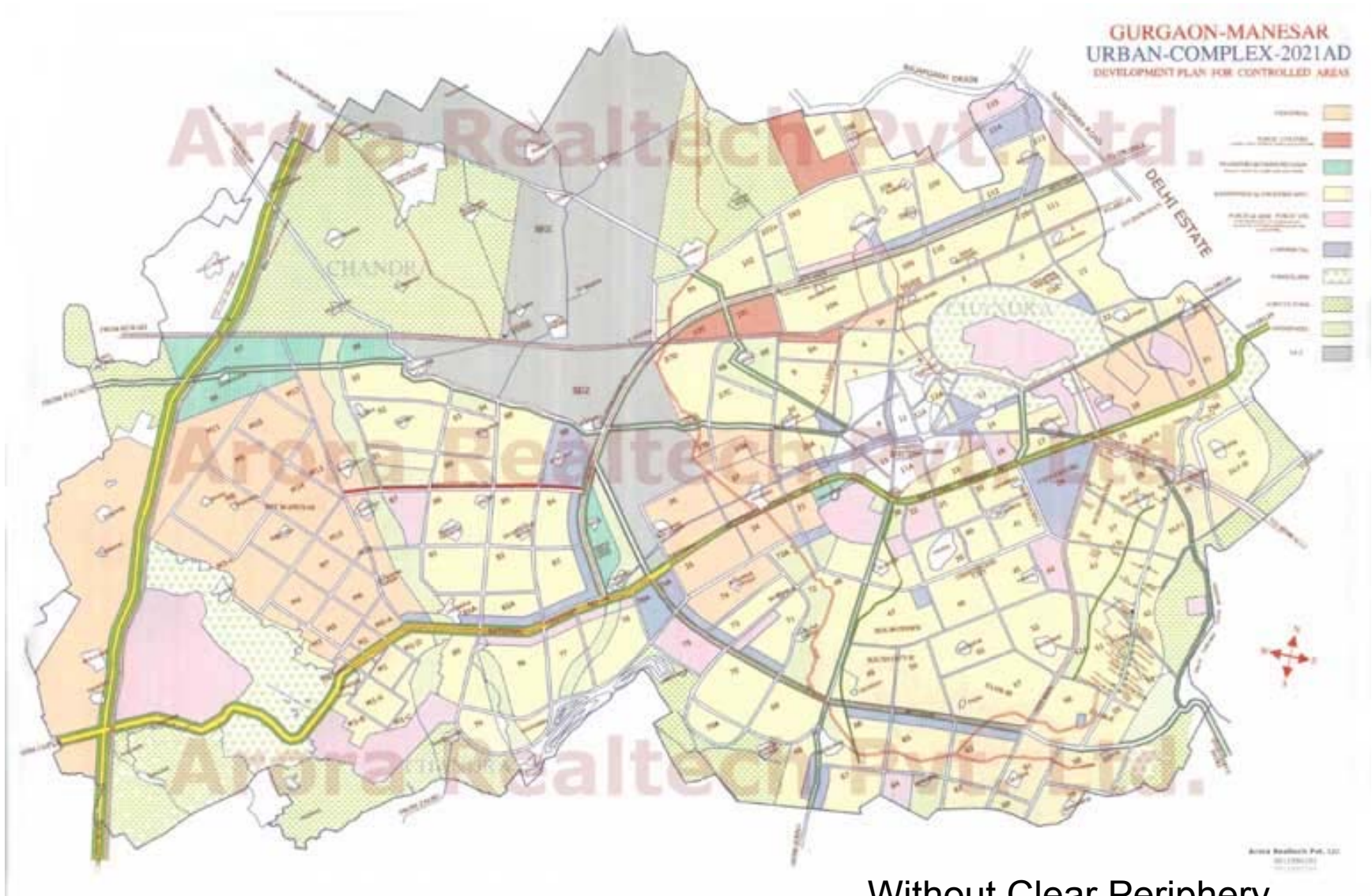
City of the Private & the Gated
(Individuals, Communities, & Vehicles)

Without the **Public (People & Pedestrians)**

Gurgaon: City without 'Structure' but an Assemblage A Patch City

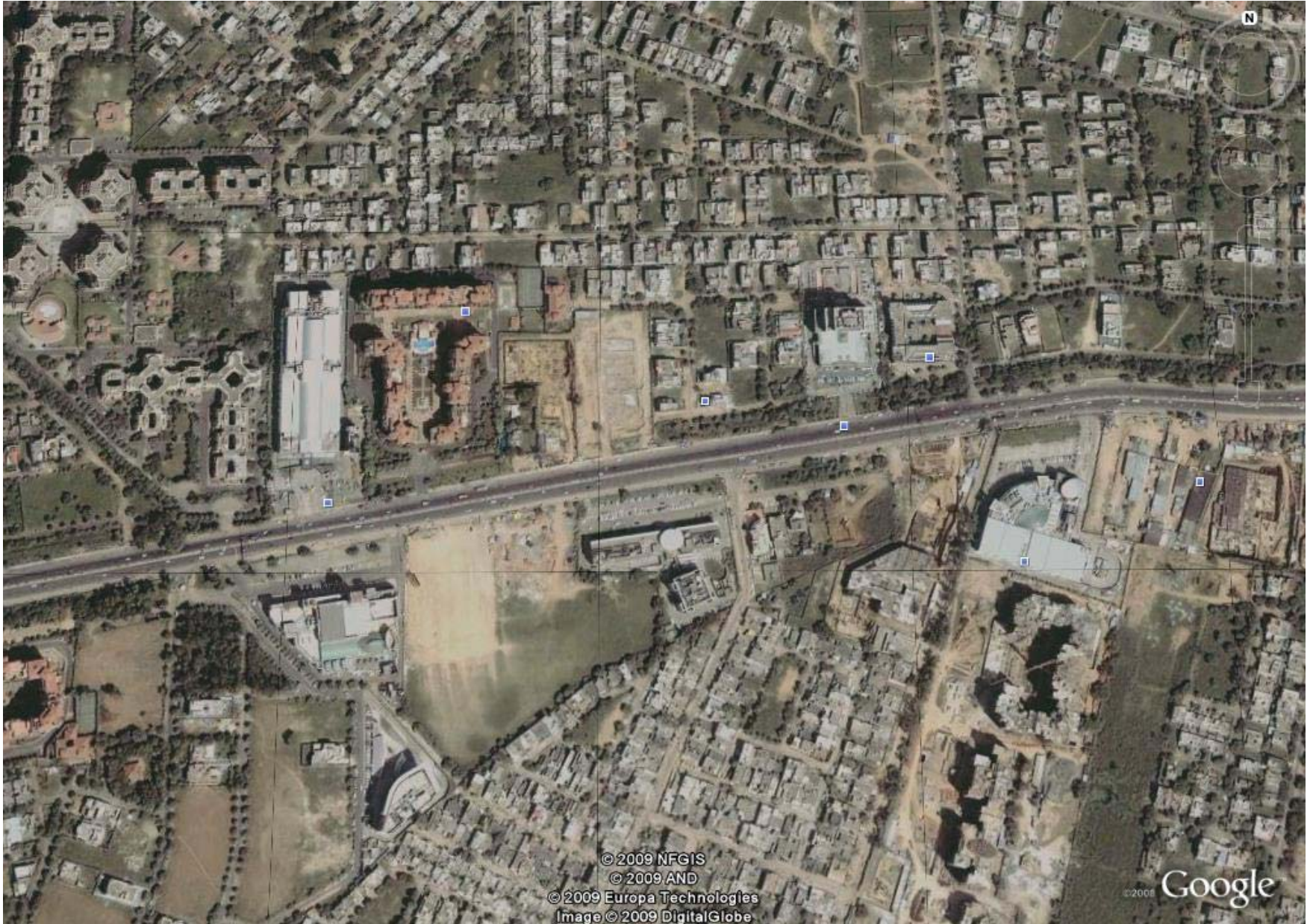


City without Centre and Sense of History



Without Clear Periphery

City without **Spine and Streets**



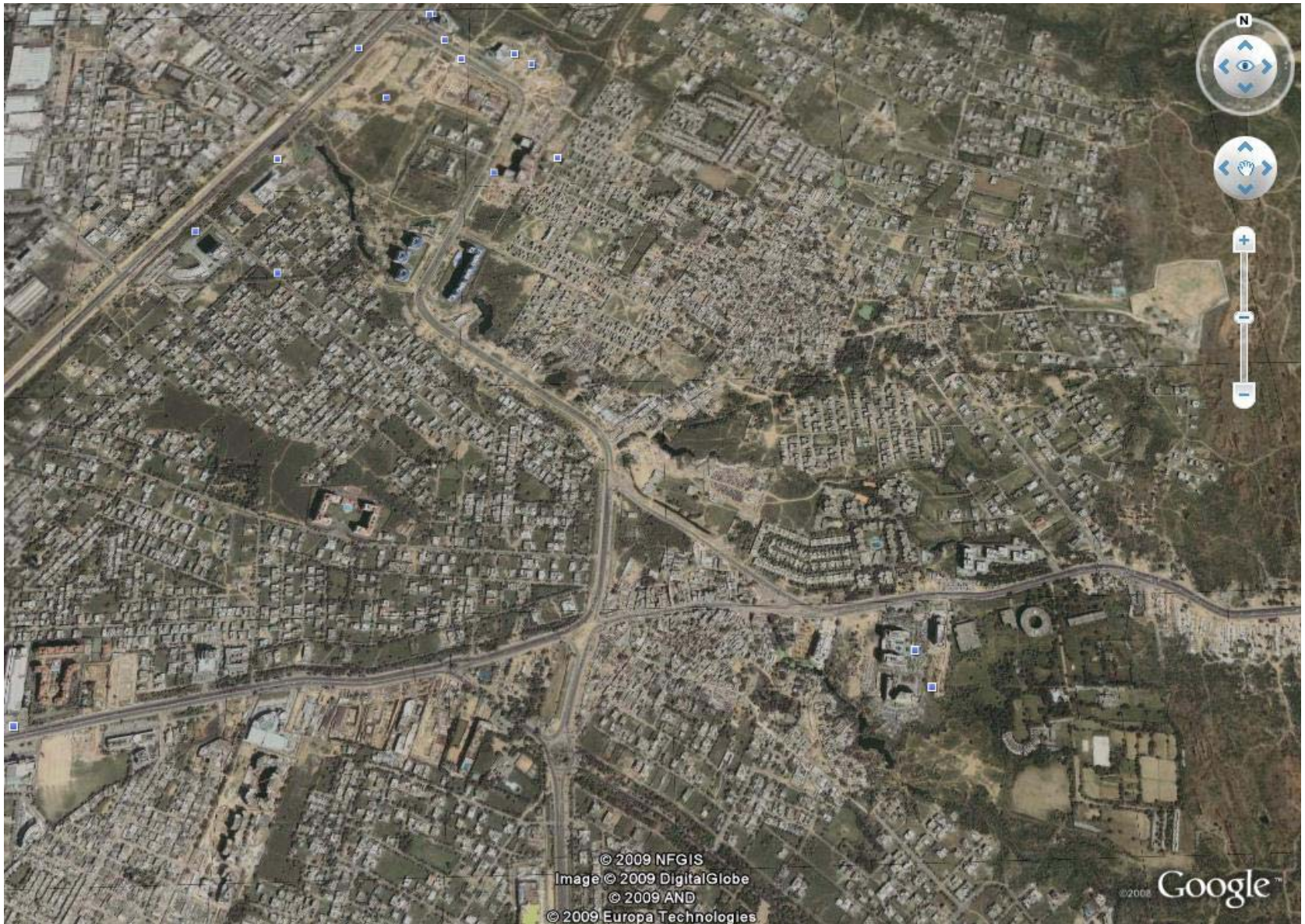
City without 'Urban Public Space'



' City of discrete 'Forms' and not of 'Form-Space'



City without 'Ground Sensitivity'





© 2009 Europa Technologies
Image © 2009 DigitalGlobe
© 2009 NFGIS
© 2009 AND

©2008 Google

28°28'54.00" N 77°05'56.78" E

elev 817 ft

Eye alt 1936 ft



Image © 2009 DigitalGlobe

© 2009 Google

© 2009 NFGIS

© 2009 AND

©2008 Google

28°25'50.09" N 77°06'34.42" E

elev 820 ft

Eye alt 5351 ft





Image © 2009 DigitalGlobe
© 2009 Google
© 2009 NFGIS
© 2009 AND

© 2008 Google

28°25'51.88" N 77°06'37.12" E

elev 829 ft

Eye alt 2315 ft

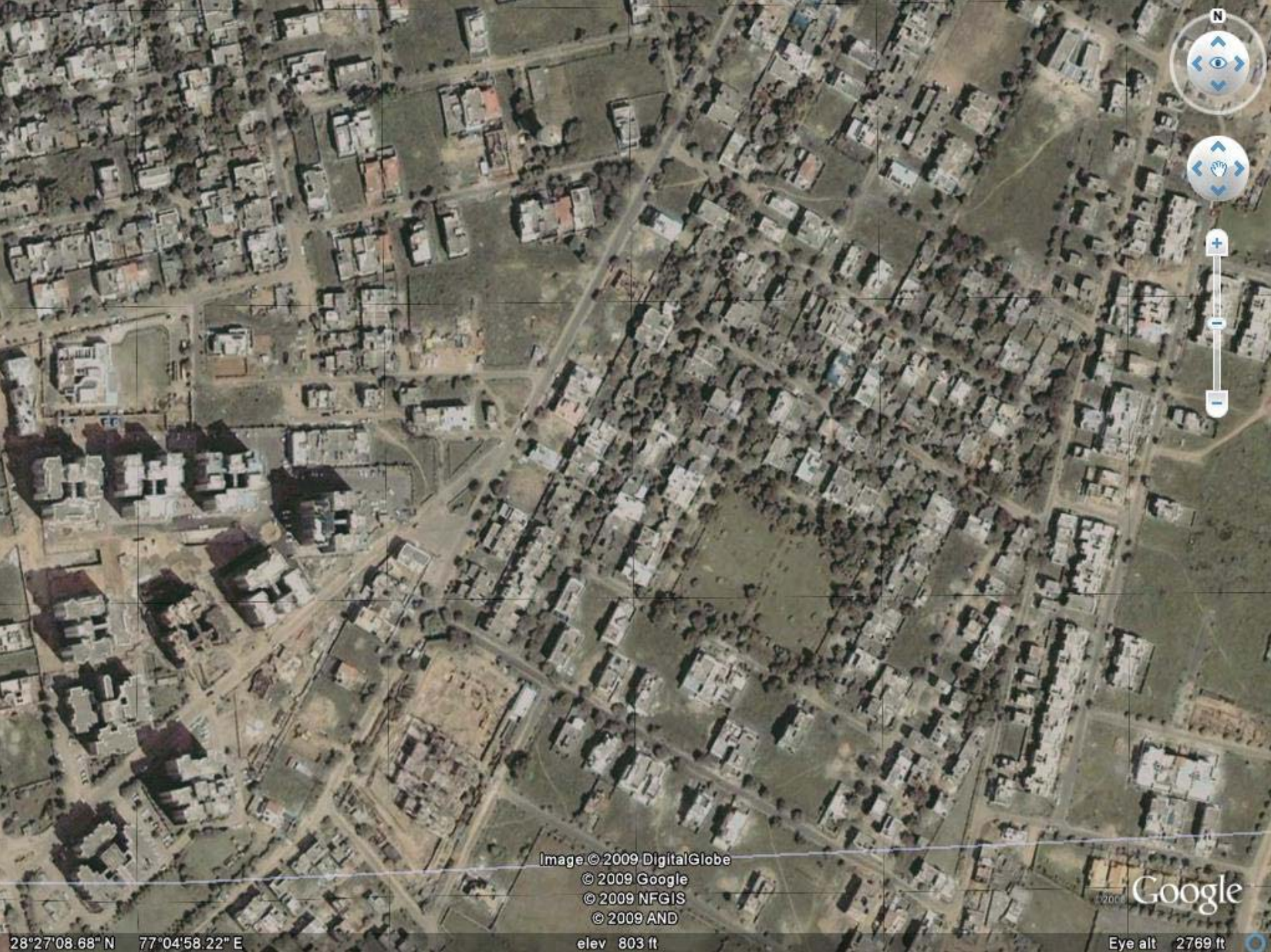


Image © 2009 DigitalGlobe
© 2009 Google
© 2009 NFGIS
© 2009 AND

Google

28°27'08.68" N 77°04'58.22" E

elev 803 ft

Eye alt 2769 ft

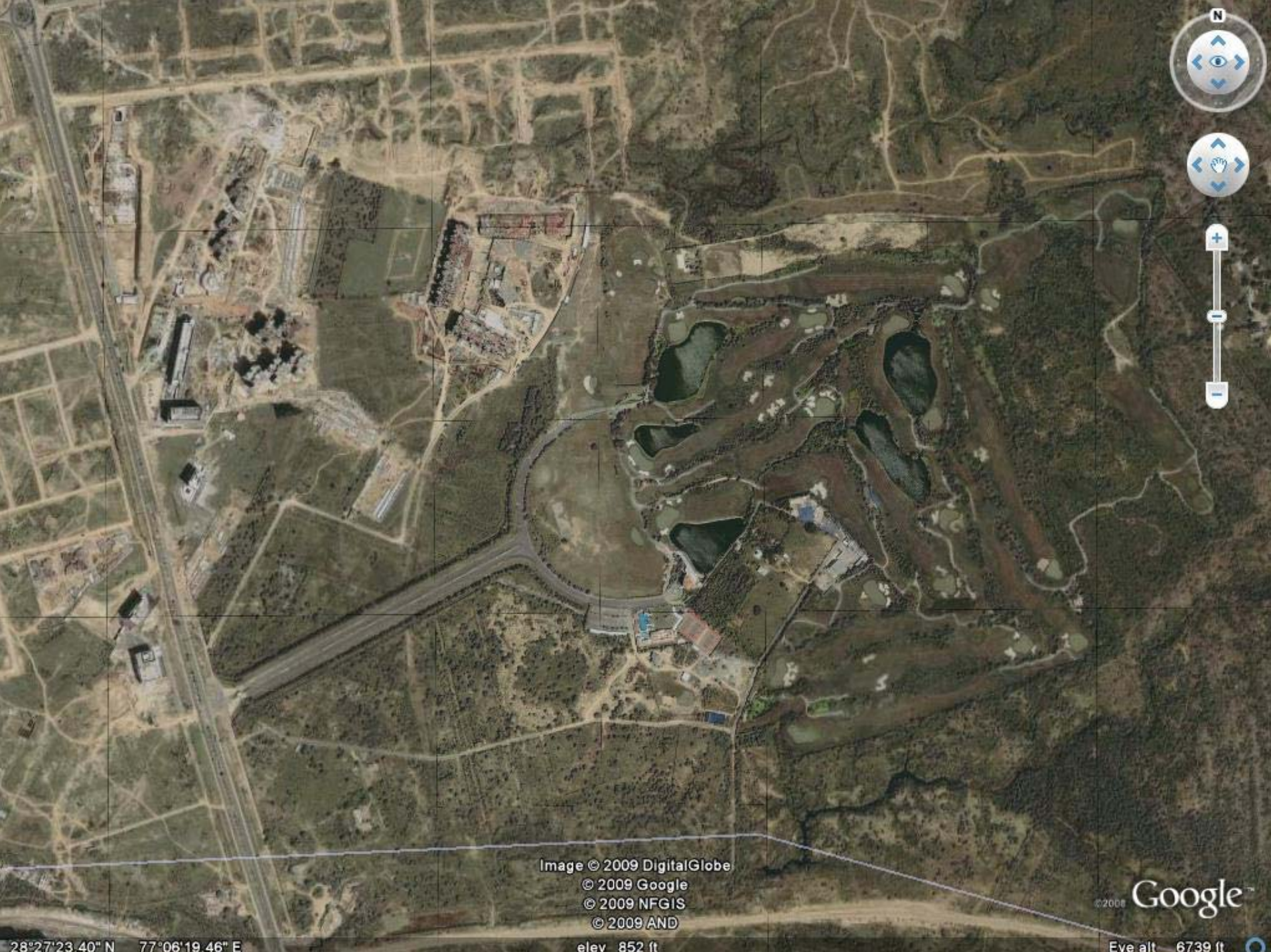


Image © 2009 DigitalGlobe
© 2009 Google
© 2009 NFGIS
© 2009 AND

©2008 Google™

28°27'23.40" N 77°06'19.46" E

elev 852 ft

Eve alt 6739 ft

City of 'Figures'



City of 'Figures' without meaningful 'Grounds'



City of **'Super - Structures'** Without **'Infrastructure'**



City of the **Private** & the **Gated** (Individuals,, Vehicles)



Without the **Public** (People)

THANK YOU